

EASY REPLACEMENT
No Tools Means No Tools!



E3-TOPMOUNT™ FILTRATION SYSTEM

The ENPRESS **E3-TOPMOUNT™** filtration system utilizes the same innovative filtration solutions as in the bottom-connecting E3 systems, but with a modified filter cap to connect directly to the in/out head at the top of the vessel system, providing an alternative option of serviceability for the consumer and installer at the top of the **NO TOOLS** filtration system.

Featuring state-of-the-art snap-ring technology to eliminate the need for cumbersome tools, homeowners and installers can easily replace the filter in their system by having certified cartridges to exceed the target contaminant removal and following a few simple steps—all now done out of the top of the system!

The system includes an exclusive integrated bypass that utilizes industry-standard threaded fitting kit connections, along with 1" MNPT elbow or straight connectors, to simplify installation and streamline field-installation inventory requirements. The ENPRESS Cartridge Tank™ is an NSF/ANSI 61 and 42 listed device and is specifically designed for residential, light commercial, and commercial point-of-entry (POE) installations and applications...100% non-metallic!

These innovative POE filtration systems/cartridges provide **FILTRATION EVERYWHERE TECHNOLOGY.®**

- **ORANGE SERIES** (pleated filters)
- **BLUE SERIES** (carbon block filters)
- **YELLOW SERIES** (string filters)
- **AZURE-D™** (broad spectrum anti-microbial filters)

FEATURES

100% non-metallic

Patented no-tools necessary snap-ring design

Multiple filtration solutions **BL OR YE GR-AD**

Full 1" MNPT plumbing connection with bypass

Large capacity filter configurations

BENEFITS

Lightweight and cost-effective housing with high chemical compatibility

Simple and easy change-out of cartridges. No tools means **no tools!**

Match the filtration solution with flow rate requirements

Extended service life, contaminant removal, and dirt holding capacity

Low pressure drop = high flow

APPLICATIONS

Ideal for residential, food service, rental fleets, commercial and industrial applications

Make-up water, RO pre-filtration, cooling towers, chill water loops, metal finishing

Process water (turbidity, particulate, colloidal suspensions)

Reduction of unwanted bad taste and odor from potable drinking water

City water applications where water softeners are a hard sell as a replacement option for pitcher, faucet, bottled water and/or refrigerator filters

Reduction in frequency of replacing common 2½" or 4½" housings (bigger is better)

Other water-based fluid solutions

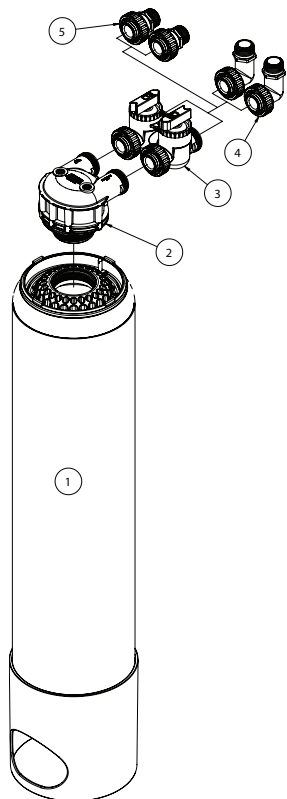
AVAILABLE IN FOUR STANDARD COLORS

Custom colors available upon request



NATURAL BLUE GREY BLACK

TECHNICAL SCHEMATICS



PART IDENTIFICATION

1. ONE-E3 Filtration System/Housing
2. In/Out Head for 1.050" Riser Pipe
3. Bypass Manifold
4. 1" MNPT 90 Degree Elbow Connector
5. 1" MNPT Straight Connector

NOT SHOWN IN DIAGRAM

1" MNPT Drain Fitting

E3-TOPMOUNT™ FILTRATION SYSTEM

INTEGRATED BYPASS, METER &
DRAIN CONNECTION SYSTEM



The E3 connection system is available to use with all POE (point-of-entry) filters in the blue, yellow, orange, and green AZURE-D™ filtration series.

EASY REPLACEMENTS NO TOOLS REQUIRED

1. PRESS THE RED PRESSURE RELIEF VALVE TO UNSEAT THE RING



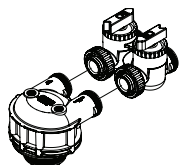
2. REMOVE SNAP RING



3. LIFT TOP CAP

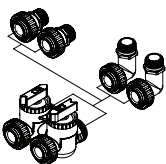


SIMPLE TOP ASSEMBLY INSTRUCTIONS



STEP 1A

Connect #3 to #2 (note: item #2 will already be threaded into the top cap).



STEP 1B

Use either part #4 or #5 for connecting your plumbing to the system.

STEP 1C

Connect drain to 1" MNPT drain fitting.

NOTE: ALL PARTS ARE HAND-TIGHTEN ONLY.



ENPRESS®, ONE®, CARTRIDGE TANK™, UMBRELLA CAP®, E3®, E3-TOPMOUNT™, FILTRATION EVERYWHERE TECHNOLOGY®, E3-MEM™, AZURE-D™, and E3-REDOX™ are trademarks of ENPRESS, LLC. US and International patents, and patent pending.



For more information, visit enpress.com or onefiltration.com

ENPRESS, LLC. // 34899 Curtis Blvd., Eastlake Ohio 44095 // Phone: 866.859.9274 // Fax: 440.510.0202 // info@enpress.com